



#DiscussAI

AI IN MY LIFE

A World
Leading SFI
Research
Centre



Introduction to AI

HOST INSTITUTION



Trinity College Dublin
Coláiste na Tríonóide, Baile Átha Cliath
The University of Dublin

HOST INSTITUTION



PARTNER INSTITUTIONS



University College Dublin
An Coláiste Ollscoile, Baile Átha Cliath
Ireland's Global University



MTU
Ollscoil Technolaíochta na Mearban
Munster Technological University



Maynooth University
National University
of Ireland Maynooth



UNIVERSITY OF GALWAY
Ollscoil na Gaillimhe

What is AI in My Life?



AI IN MY LIFE

- Workshop series on Artificial Intelligence
- Developed by ADAPT research centre and partners
- Designed to help students navigate the 'Age of AI'

Our Partners:



What you'll learn today



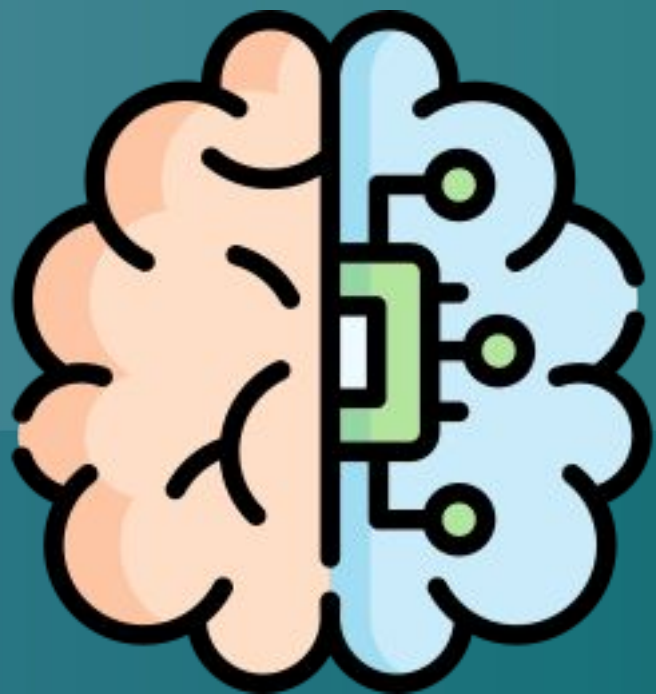
AI IN MY LIFE

- Understand what AI is
- Explain what we mean by “intelligent”
- Be able to cite examples of uses of AI

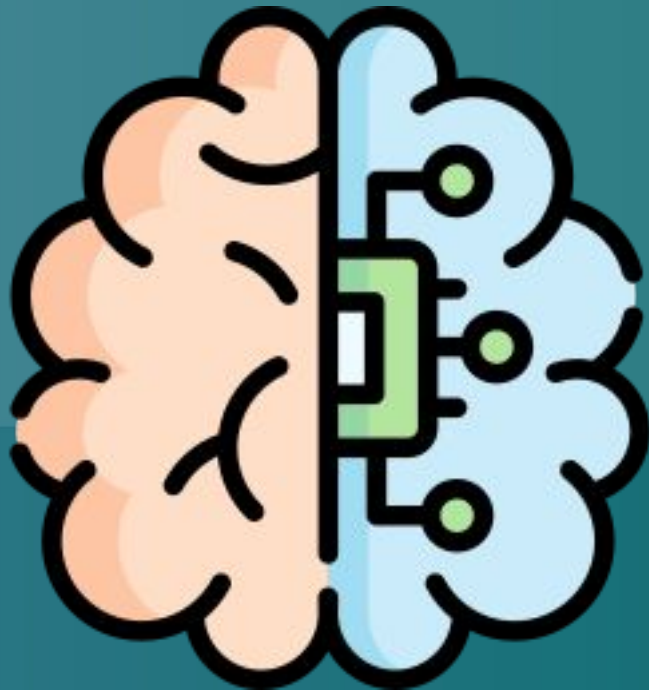
Our Partners:



What is AI?

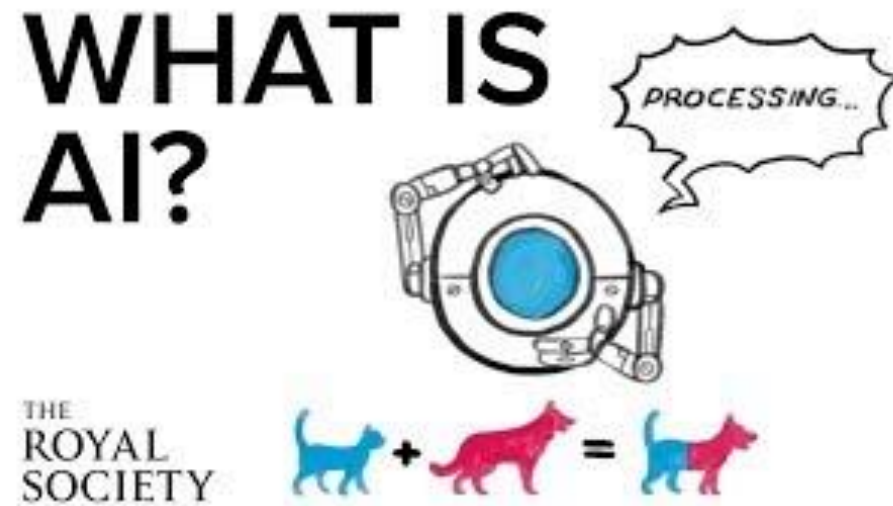


What is AI?



Artificial intelligence refers to **many different technologies** that are designed to **accomplish tasks** that can **otherwise be only carried out by human minds**, for example identifying patterns, recognising images, understanding languages or solving problems.

What is AI?



The Royal Society-
https://www.youtube.com/watch?v=nASDYRkbQIY&feature=emb_imp_woyt

Do you use AI?

AI around us

Can you list some
everyday items we
rely on that use AI?

AI around us

Can you list some everyday items we rely on that use AI?

ARTIFICIAL INTELLIGENCE

Everyday and potential use

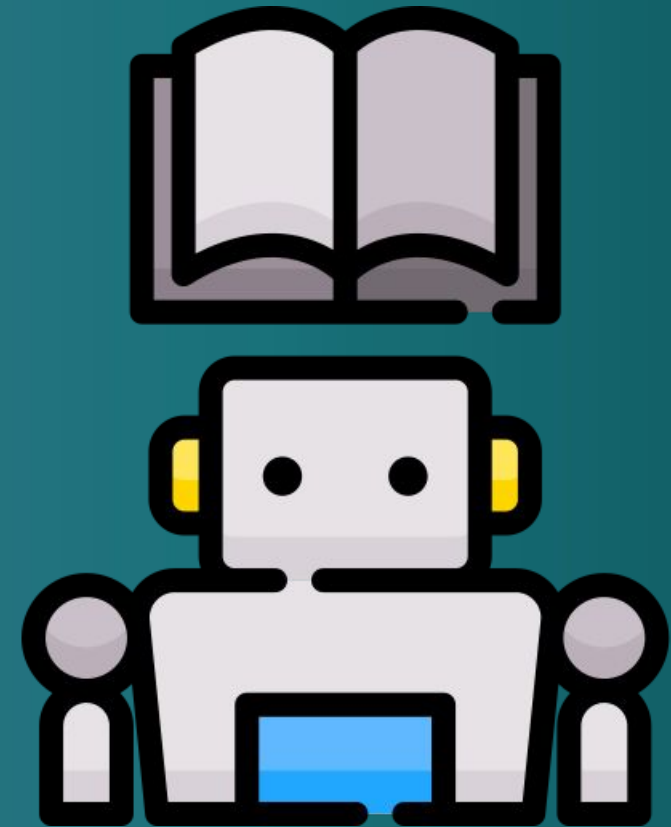
A few examples of how we already use AI and the possibilities it offers



What can AI be used for?

We're now going to watch some videos that show where researchers and businesses have started to use AI.

Can you think of what the pros and cons of using AI might be?



Video A - Discuss

Machine Learning:

A Whale Tale - The Big Idea

Amazon Web Services

Meet a marine biologist who has spent her career trying to better understand sperm whales. A self-described "technophobe", she now embraces machine learning models to understand more about these marine mammals so that they stand a better chance at survival.

How is AI used by this company/organisation?

Could this be done without AI?

Are there any downsides to this approach?



<https://youtu.be/ZZs4R-5u4g4>

Video B - Discuss

AI is helping to advance the health of people and communities around the world

‘Stevie II’ – Ireland’s first socially assistive robot with advanced AI features

How is AI used by this research team?

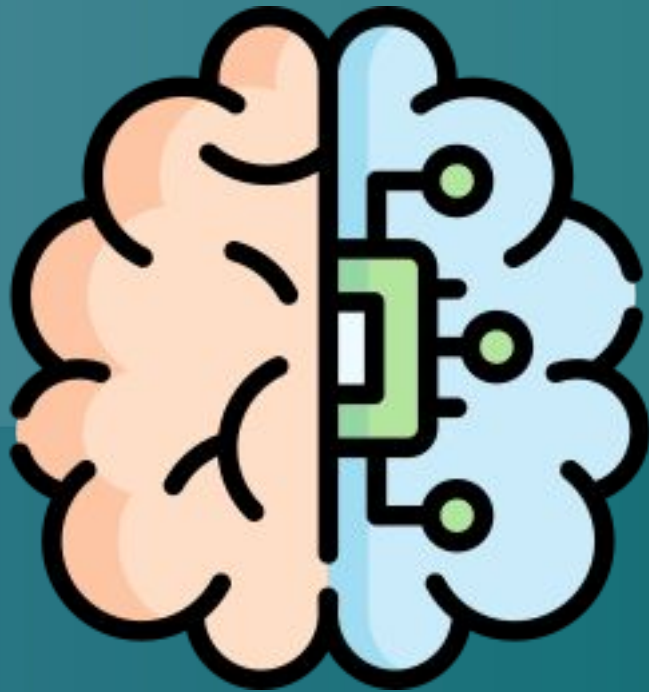
Could this be done without AI?

Are there any downsides to this approach?



<https://youtu.be/bRIVtjkhQ8M?si=Th0HkR88esd0bCLa>

What do we mean by “intelligence”?



Artificial intelligence refers to many different technologies that are designed to accomplish tasks that can otherwise be only carried out by human minds, for example **identifying patterns, recognising images, understanding languages or solving problems.**

AI Capabilities

Computing is about making machines that appear to be intelligent.

How is it done?

What do we mean by human intelligence?

If we identify abilities in humans that require intelligence, we can then build machines to **simulate** having these abilities.

Take part in a test of intelligence with **The Intelligent Piece of Paper** activity!

What about recent advances?

Recent advances have achieved progress in delivering some of the harder-to-replicate aspects of intelligence

For example...



<https://www.youtube.com/watch?v=bwHOHkALR4>

Artist or AI? Quiz

Just how good is Generative AI?

Can you tell the difference
between real art or AI?

Give it a go:

<https://bit.ly/Art-Or-AI>

Is it Art or AI?

Total points 1/6 ?

Look at the painting, see if you think it was created by an artist or AI.

1 of 6 points

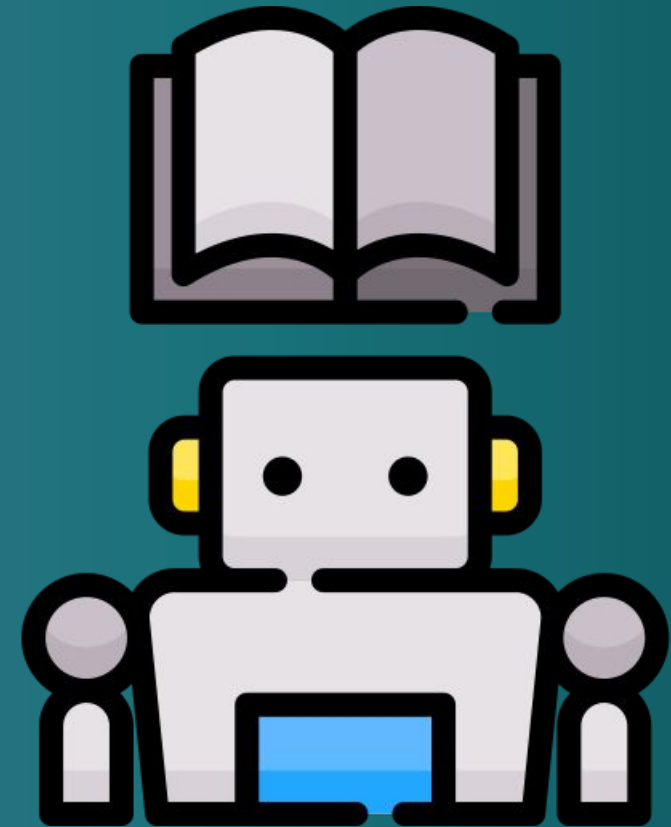
× 1.

0/1



AI Capabilities

Which aspects of “intelligence” do you think machines find hardest to achieve?



Human Capabilities

What are humans good at?

Being self-aware

Being passionate

Showing compassion

Understanding
emotion

Appreciating context

Learning from
experience



What have we learned?

We know what AI is

We know what “intelligent” means

We can give examples of uses of AI



AI IN MY LIFE #DiscussAI

A World
Leading SFI
Research
Centre



Want to find out more about AI?

Explore more AI in My Life modules:

www.adaptcentre.ie/projects/ai-in-my-life/

Thanks to our partners:





AI IN MY LIFE #DiscussAI

A World
Leading SFI
Research
Centre



Optional Extra Starter Activity

Thanks to our partners:



Think you know about AI?

Quiz Time!

Go to:

bit.ly/AIQuizTime



How much do you know about Artificial Intelligence? As the technology rapidly advances, test your knowledge of how AI affects life now and its possible impacts in the near future.



Image: Getty Images

A job likely to soon be replaced by AI is...

a social worker.

a customer service agent.

a car mechanic.

1/8