



#DiscussAI

AI IN MY LIFE

A World
Leading SFI
Research
Centre



Taster Workshop

HOST INSTITUTION



Trinity College Dublin
Coláiste na Tríonóide, Baile Átha Cliath
The University of Dublin

HOST INSTITUTION



PARTNER INSTITUTIONS



University College Dublin
An Coláiste Ollscoile, Baile Átha Cliath
Ireland's Global University



MTU
Ollscoil Technolóigeach na Manúchan
Munster Technological University



TUS



Maynooth University
National University
of Ireland Maynooth



UNIVERSITY OF GALWAY
UNIVERSITY OF GALWAY

What is AI in My Life?



AI IN MY LIFE

- Workshop series on Artificial Intelligence
- Developed by ADAPT research centre and partners
- Designed to help students navigate the 'Age of AI'

Our Partners:



What you'll learn today



AI IN MY LIFE

- Learn about AI and how it's used
- Uncover some of the ethical and privacy implications of AI
- Evaluate the role of AI in your life and in society

Our Partners:



A few quick questions

Join at menti.com | use code **86 74 86**

AI IN MY LIFE TASTER WORKSHOP

1. What words do you associate with artificial intelligence?

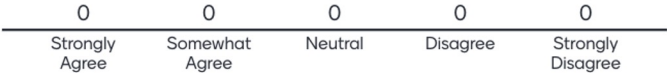
Waiting for responses ...



Join at menti.com | use code **86 74 86**

AI IN MY LIFE TASTER WORKSHOP

2. I understand what 'Artificial Intelligence' is

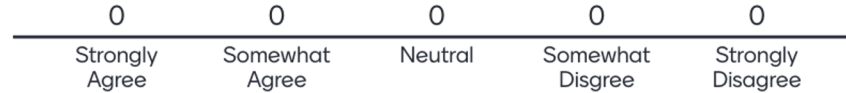


Join at menti.com | use code **86 74 86**



AI IN MY LIFE TASTER WORKSHOP

3. I use Artificial intelligence in my daily life.

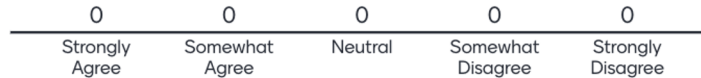


Join at menti.com | use code **86 74 86**

 Mentimeter

AI IN MY LIFE TASTER WORKSHOP

4. I am interested in talking about artificial intelligence with other people.

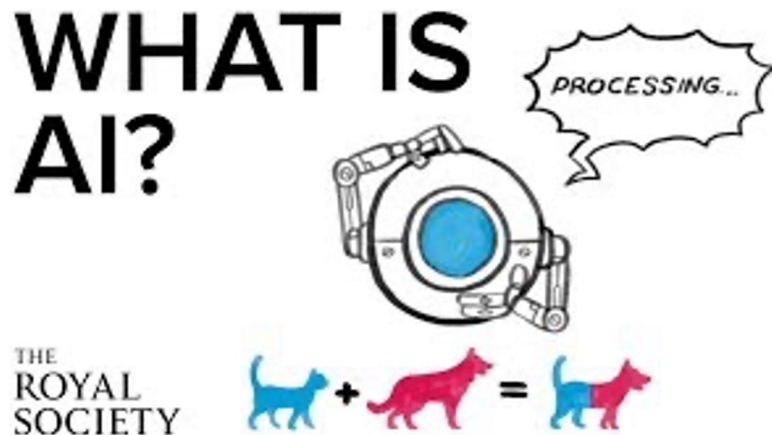


What is AI?



Artificial intelligence refers to **many different technologies** that are designed to **accomplish tasks** that can **otherwise be only carried out by human minds**, for example identifying patterns, recognising images, understanding languages or solving problems.

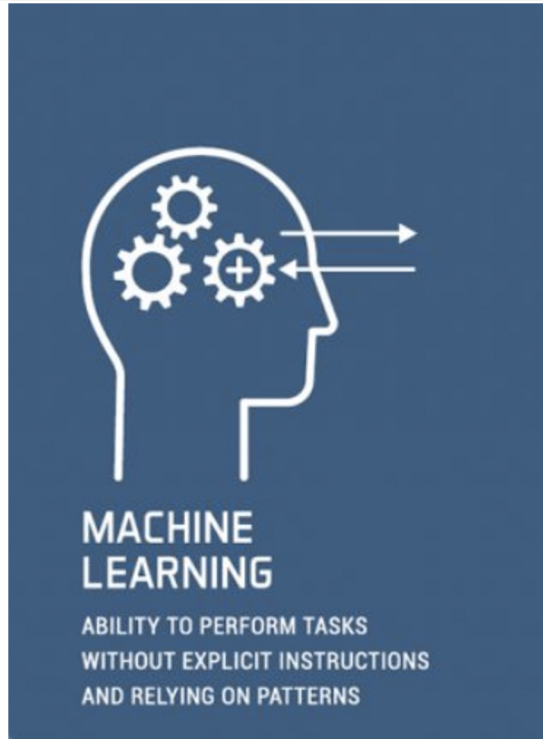
What is AI?



The Royal Society-

https://www.youtube.com/watch?v=nASDYRkbQIY&feature=emb_imp_woyt

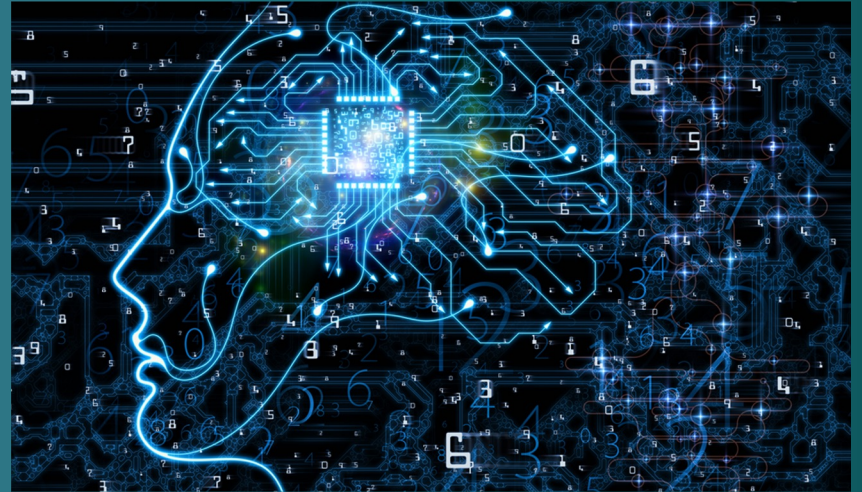
Machine Learning



In the 1950s AI pioneer Arthur Samuel defined Machine Learning as “the field of study that gives computers the ability to learn without explicitly being programmed.”

Machine Learning

Where might we use machine learning in our daily lives?



Machine Learning



https://www.youtube.com/watch?v=f_uwKZIAeM0

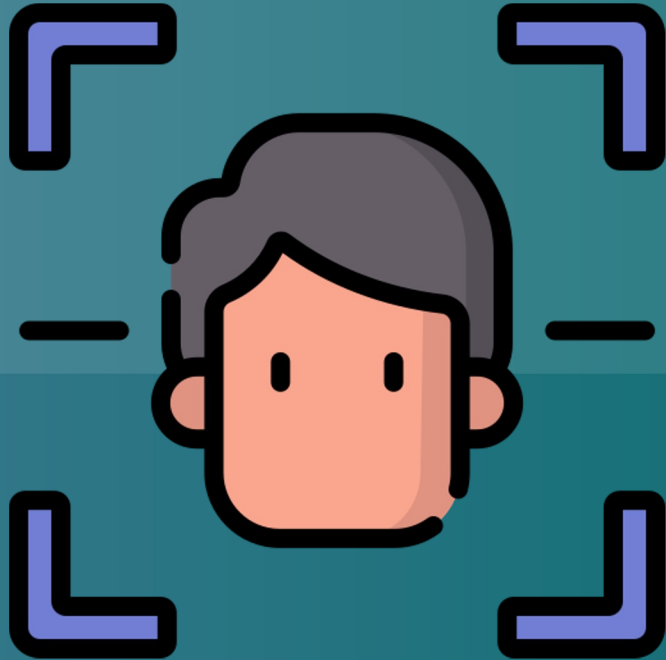
Machine Learning Examples



Take out your phones/tablets and go to:

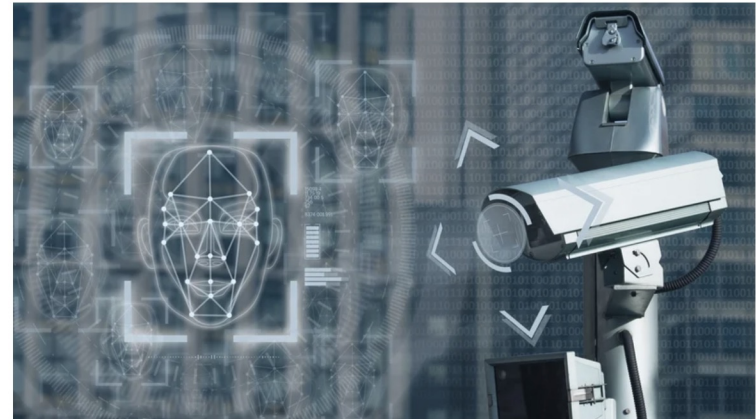
<https://thing-translator.appspot.com/>

Facial Recognition



Plan to introduce facial recognition technology for use by gardaí

Updated / Wednesday, 25 May 2022 07:05



Facial recognition technology enables automated searches of CCTV footage

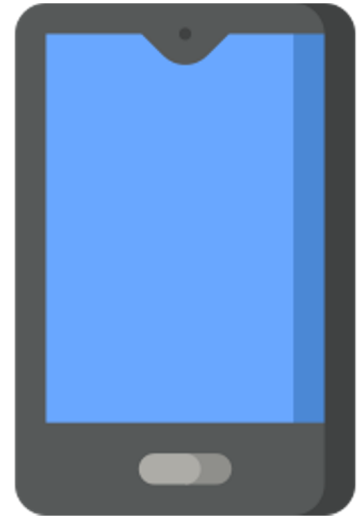
Emotion Detection



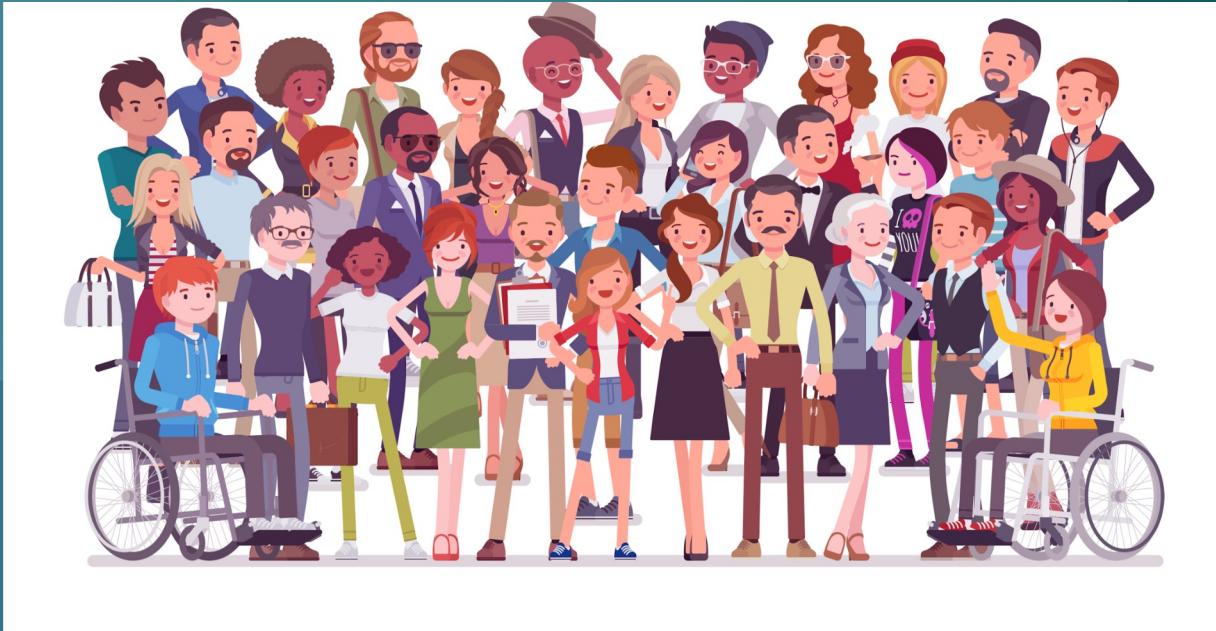
Emotion Detection

Use the below link on your phone or laptop. Follow the instructions on the webpage.

[Financial Times Emotion Detection](https://ig.ft.com/emotion-recognition/)
<https://ig.ft.com/emotion-recognition/>



Could AI be biased?



“We don't see things as they are, we see them as *we* are.”

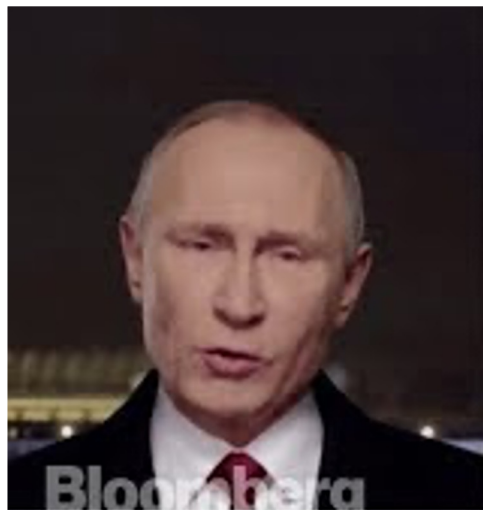
Does Bias really matter?



Is AI always used for good?



Is AI always used for good?



Reference



Our Result

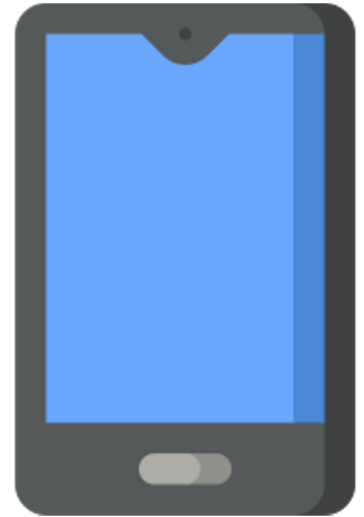
<https://www.youtube.com/watch?v=gLoI9hAX9dw>

Detecting Deepfakes

Use the below link on your phone or laptop. Follow the instructions on the webpage.

[Detect Fakes](https://detectfakes.media.mit.edu/)

<https://detectfakes.media.mit.edu/>



Deepfakes

Could Deepfakes be used for good?

What's your data worth?



Do you care about your data?



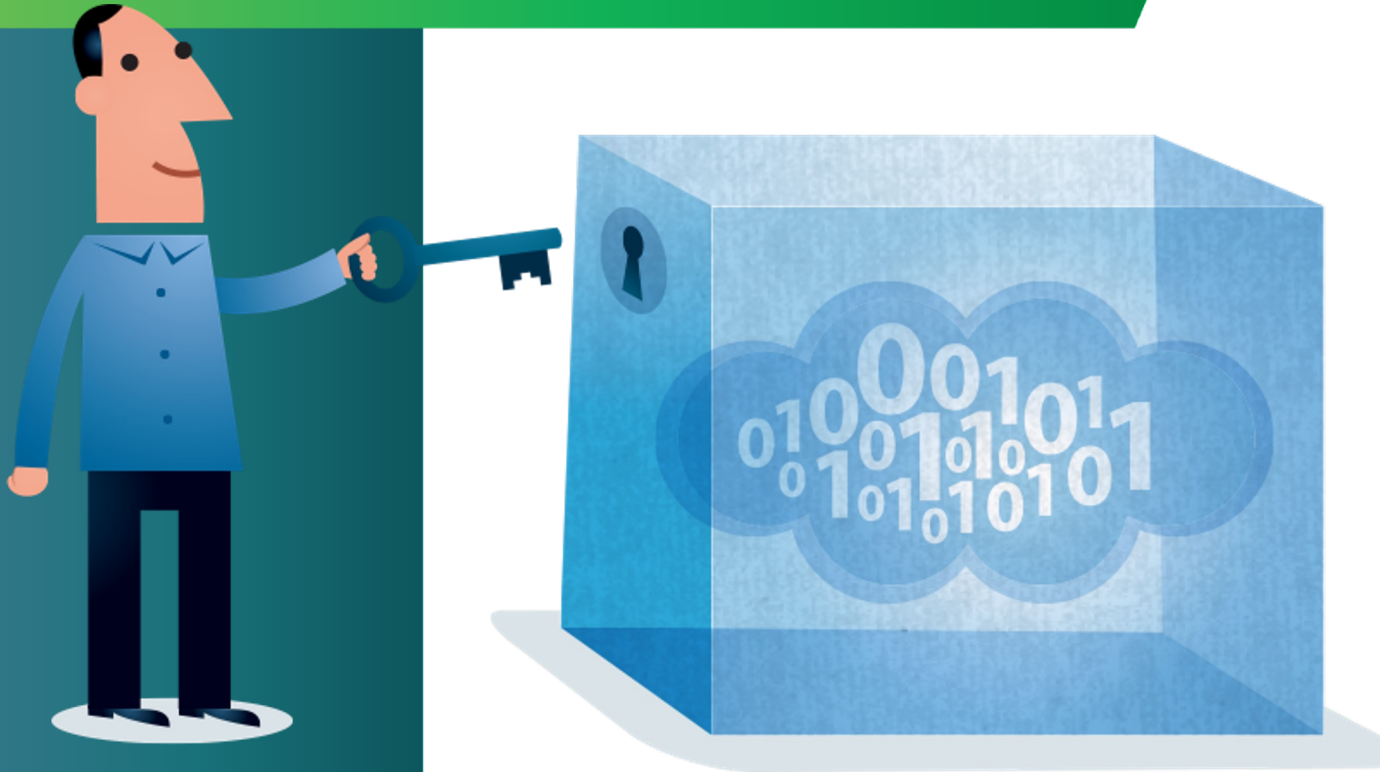
- Do you mind that Mark Zuckerberg knows your name?
- Do you mind that he can see your Insta/WhatsApp account (even though you didn't add him as a friend)?
- Do you mind that he knows your top 5 friends?
- Do you mind that he knows your top 5 posts?
- What about if he knows how you reacted to others' posts?
- What about your DMs?

Do you care about your data?



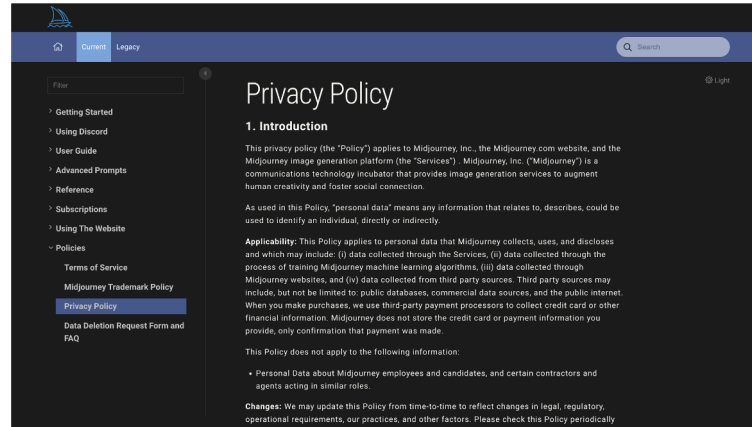
- Do you mind that **your teacher** knows your name?
- Do you mind that (s)he can see your Insta/WhatsApp account (even though you didn't add him as a friend)?
- Do you mind that (s)he knows your top 5 friends?
- Do you mind that (s)he knows your top 5 posts?
- What about if (s)he knows how you reacted to others' posts?
- What about your DMs?

Protecting Your Data while using AI Tools



Protecting Your Data while using AI Tools

1. Always Check the Privacy Policy Before Use



Midjourney privacy policy:
<https://docs.midjourney.com/docs/privacy-policy>

Tips from:
<https://www.wired.co.uk/article/how-to-use-ai-tools-protect-privacy>

Protecting Your Data while using AI Tools

2. Watch what you share

ChatGPT

Tips for getting started

■ Ask away

ChatGPT can answer questions, help you learn, write code, brainstorm together, and much more.

● Don't share sensitive info

Chat history may be reviewed or used to improve our services. Learn more about your choices in our [Help Center](#).

▲ Check your facts

While we have safeguards, ChatGPT may give you inaccurate information. It's not intended to give advice.

Okay, let's go



CHATGPT

OpenAI privacy policy:

<https://openai.com/policies/privacy-policy>

Tips from:
<https://www.wired.co.uk/article/how-to-use-ai-tools-protect-privacy>

Protecting Your Data while using AI Tools

3. Change your settings

Configuring your settings

[Visit your Google Account](#) to access settings and tools that let you safeguard your data and protect your privacy.

If you want to use Bard without saving your conversations to your Google Account, you can [pause saving your Bard activity](#). You can review your prompts or delete your Bard conversations from your Bard activity at myactivity.google.com/product/bard. Bard conversations that have been reviewed or annotated by human reviewers (and related data like your language, device type, location info, or feedback) are not deleted when you delete your Bard activity because they are kept separately and are not connected to your Google Account. Instead, they are retained for up to three years.

Even when Bard Activity is off, your conversations will be saved with your account for up to 72 hours. This lets Google provide the service and process any feedback. This activity won't appear in your Bard Activity. [Learn more](#)

If you turn off this setting or delete your Bard activity, other settings, like [Web & App Activity](#) or [Location History](#), may continue to save location and other data as part of your use of other Google services. In addition, when you integrate and use Bard with other Google services, they will save and use your data to provide and improve their services, consistent with their policies and the Google [Privacy Policy](#).

You can [request](#) for the removal of content under our policies or applicable laws. You can also [export](#) your information.

No thanks

More

Tips from:
<https://www.wired.co.uk/article/how-to-use-ai-tools-protect-privacy>



Google privacy policy:
<https://policies.google.com/u/2/privacy>

AI and Ethics

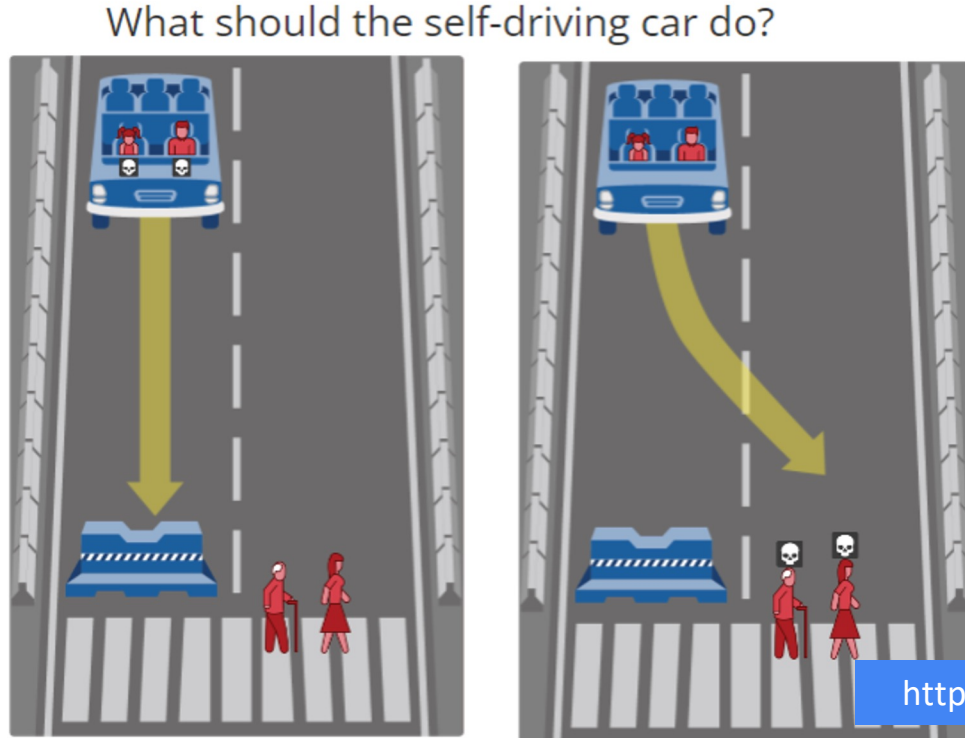


“If this happens, let’s program the car to move 2 inches away from the truck, to reduce risk of collision. I don’t like cyclists anyway!”

Source:
<https://www.evilaicartoons.com>

Ethical Decisions of AI

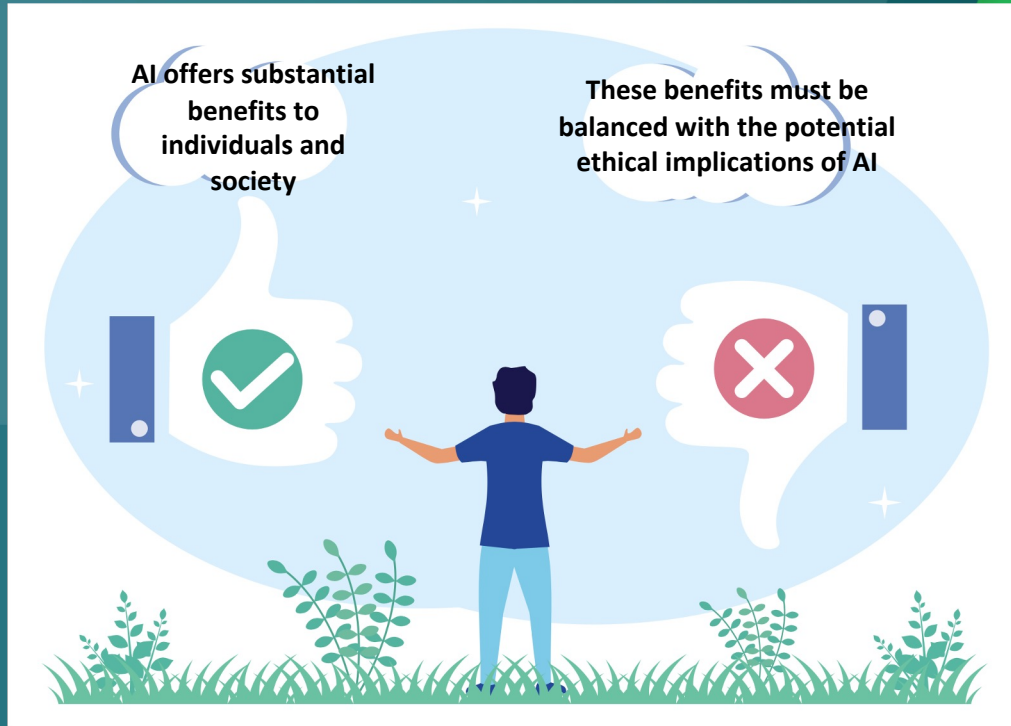
The self-driving car with sudden brake failure will continue ahead and crash into a barrier ***killing a middle aged man and his young daughter***



The self-driving car with sudden brake failure will continue ahead and crash into a barrier ***killing an elderly man and a middle aged woman***

<https://www.moralmachine.net>

The Key Message



What have we learned?

AI is transforming our lives

The influence of AI is growing constantly

We need to balance the benefits with the drawbacks

You need to be ready for the 'Age of AI'

Join at menti.com | use code **2710 8752**

AI IN MY LIFE TASTER WORKSHOP

1. What words do you associate with artificial intelligence?

Waiting for responses ...

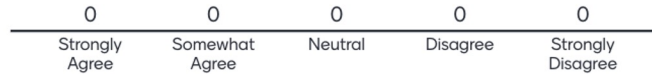


Join at menti.com | use code **2710 8752**

 Mentimeter

AI IN MY LIFE TASTER WORKSHOP

2. I understand what 'Artificial Intelligence' is



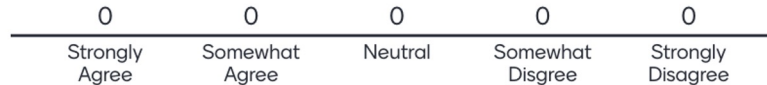
Join at menti.com | use code **2710 8752**

 Mentimeter

AI IN MY LIFE TASTER WORKSHOP

3. I use Artificial Intelligence in my daily life.

Please continue right to the end of the survey (8 questions)





AI IN MY LIFE #Discuss AI

A World
Leading SFI
Research
Centre



Want to find out more about AI?

Sign up for more AI in My Life modules at:

[www.adaptcentre.ie/ai-in-my-life/
education@adaptcentre.ie](http://www.adaptcentre.ie/ai-in-my-life/education@adaptcentre.ie)

Thanks to our partners:



THE IRISH SOFTWARE
RESEARCH CENTRE



This work is licensed under a [Creative Commons Attribution-NonCommercial-ShareAlike 4.0 International License](https://creativecommons.org/licenses/by-nc-sa/4.0/)

